

Motorized height adjustment with 20-cm travel delivers a flexible ergonomic scanning position



Customizable touch screen user interface to personalize your workflow



Four active transducer ports so the transducer you need is always ready to use



Down lit pull-out keyboard provides flexibility for annotations and data entry

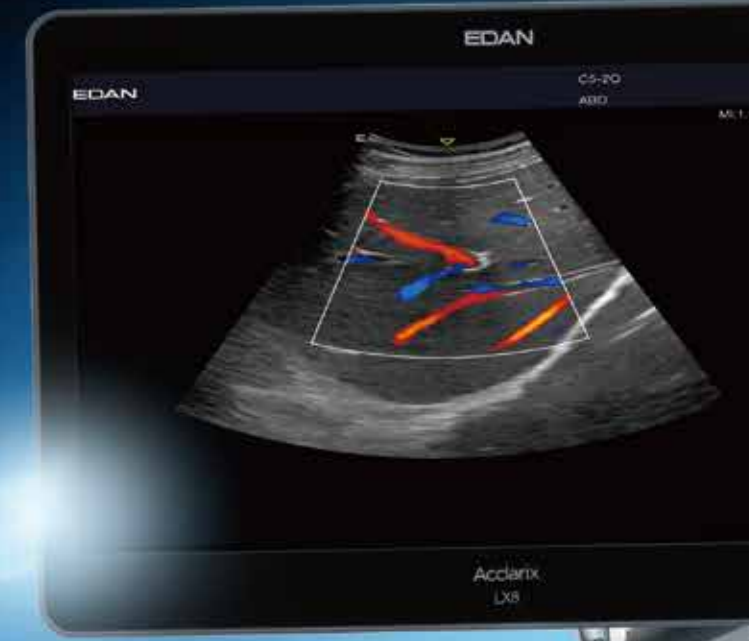


Transducers



Prepare to be Enlightened

Acclarix[™] LX8
Diagnostic Ultrasound System



A Clear Vision

Ultrasound reimagined

Born of a vision to deliver meaningful design innovations that benefit the user. The Acclarix LX8 features a host of design breakthroughs that make day-to-day operation easy, fast and intuitive. The result is an elegant simplicity where form and function meet at the tips of your fingers.



Global Headquarters:
Edan Instruments, Inc. | 15 Jinhui Road, Pingshan District, Shenzhen
518122 P.R. China | +86.755.26898326 | www.edan.com | info@edan.com

U.S. and Canada inquiries:
EDAN Diagnostics, Inc. | 9918 Via Pasar, San Diego, CA 92126
+1.858.750.3066 | www.edandiagnostics.com | edan-info@edandiagnostics.com

© Edan Instruments, Inc. All rights reserved. Features and specifications are subject to change without prior notice. No reproduction, copy or transmission may be made without written permission. Not all products or features are available in all countries, contact Edan for local availability.



ENG-US-LX8-V1.0-20200508



Singularly Flexible.
Uniquely Powerful.



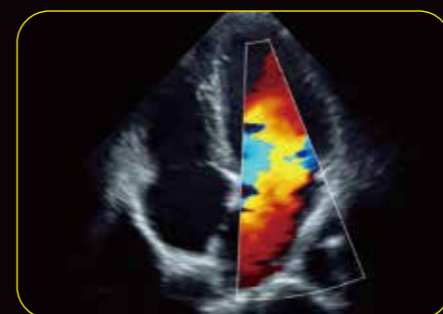
C5-2MD
Fetal Face



C5-2D
Color Doppler Kidney



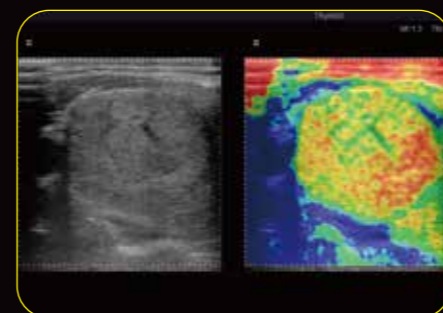
C5-2D
Umbilical Cord CDI



P5-1D
4-chamber view



E10-3HD
Follicle



L12-5D
Thyroid Elastography Image

Versatility & Innovation Meet Value & Performance

When it comes to power, performance, innovation and flexibility - there is one ultrasound system that delivers more. Designed specifically to address the challenges of busy ultrasound environments, the Acclarix™ LX8 Ultrasound System features a host of design breakthroughs that make day-to-day operation easy, fast and intuitive.

- Unparalleled image quality with one key optimization for all modes and all applications
- User customizable 10" touch screen with innovative gesture control user interface
- Large 21" tilt-and-swivel, HD wide-screen anti-glare LCD monitor

Image Quality Without Compromise

Flexibility, versatility and user-friendly features are just the beginning. The Acclarix LX8 system also delivers the brilliant clarity and stunning image quality required for fast-paced environments.

- High fidelity, high-channel count architecture results in superb detail resolution, particularly at depth
- Tissue Adaptive Imaging (TAI) continuously and automatically optimizes imaging allowing more focus on the patient
 - In B-mode, TAI fine tunes multiple parameters to provide the best possible image quality
 - In Doppler, TAI automatically adjusts for flow state providing improved continuity, border detection and fill-in

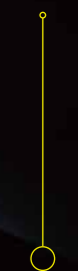
Concept + Design



Silicon Valley
USA



Design + Manufacture



Shenzhen
China

The Virtue of Value

How can Edan deliver so much innovation AND so much value? By capitalizing on the experience and expertise of a truly global enterprise. Acclarix technology is the result of Silicon Valley innovation and engineering excellence combined with Chinese design and manufacturing proficiency. The Acclarix LX8 delivers unmatched value and performance across a broad range of applications:

- Abdomen
- OB/GYN
- Difficult-to-Image

- Cardiac Screening
- Vascular
- Breast

- Small Parts
- MSK
- Nerve